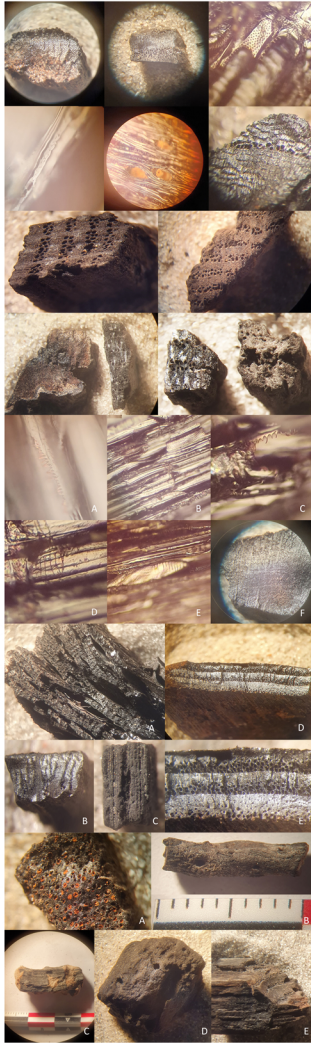


WOODAN: CHARCOAL

A NEW ANTHRACOLOGICAL DATABASE

Developing a version of WOODAN for documentation of charcoal data



Why?

Anthracological analysis is an important component of archaeological and palaeoecological research in The Netherlands and Belgium. This research has resulted in a large body of data which needs to become more accessible.

What?

In the past year, a work group of charcoal specialists and database developers from state agencies, universities and private research institutes, has begun work on a new repository for charcoal data based on the existing WOODAN: wooden artefacts database. WOODAN: wooden artefacts is an open, web-based resource developed for documentation of wooden finds.

How?

WOODAN: charcoal will become an independent database, with a structure created specifically for anthracological data. Like WOODAN: wooden artefacts, it will be an open, web-based resource.

Interested?

Would you like receive future updates about WOODAN: charcoal, provide feedback or actively participate in development meetings and workshops? Then, please scan the QR code below:




woodancharcoal.org

WOODAN is a Web database using MySQL for storing data and Laravel (PHP) as language between the database and the website which is running on Bootstrap (HTML, CSS) and Javascript

For questions about the technology of WOODAN, please email: info@woodan.org



Radek Grabowski
Biax 

Silke Lange
Biax 

Koen Deforce
Ghent University
Royal Belgian Institute
of Natural Sciences 

Kristof Haneca
Flanders Heritage Agency 

Otto Brinkkemper
Dutch Heritage Agency 

Anja Fischer
University of Amsterdam
UvA 

Ronald Visser
Saxion University 

Jelte van der Laan
Cambium Botany 

Stephan Nicolaij
Qursi Software 